

# *Violin Zoom!*

Boom Chicka Boom!

A collection of  
call & response pieces,  
to help with playing together  
while remote teaching.

In each piece the BLUE & GREEN notes are of equal difficulty  
and the players can take turns going first.

The ORANGE notes are for the teacher  
or more advanced player.

© 2020 Vanessa Gaidoni

# OPEN STRINGS

## Let's Go!

Musical notation for the 'Let's Go!' section. It consists of two staves. The top staff is labeled 'E String' and 'A String'. The bottom staff is labeled 'D String' and 'G String'. The music is in 4/4 time with a key signature of one sharp (F#). The E and A strings play a rhythmic pattern of quarter notes, while the D and G strings play a similar pattern. The lyrics 'Let's Go!' are written below the notes.

## Shave and a hair-cut...

Musical notation for the 'Shave and a hair-cut...' section. It consists of two staves. The top staff is labeled 'E String' and 'A String'. The bottom staff is labeled 'D String' and 'G String'. The music is in 4/4 time with a key signature of one sharp (F#). The E and A strings play a rhythmic pattern of quarter notes, while the D and G strings play a similar pattern. The lyrics 'Shave and a hair-cut two bits' are written below the notes.

Folk Song

## Boom Chicka Boom

Musical notation for the 'Boom Chicka Boom' section. It consists of four staves. The music is in 4/4 time with a key signature of one sharp (F#). The notes are colored green and blue. The lyrics 'Boom Chick-a Boom (Boom Chick-a Boom) Boom Chick-a Boom (Boom Chick-a Boom)' are written below the first staff. The lyrics 'Boom chick - a rock - a chick - a rock - a chick - a boom' are written below the second and third staves. The lyrics 'Boom Chick-a boom (Boom Chick-a boom) Boom Chick-a boom (Boom Chick-a boom)' are written below the fourth staff.

# 1st Fingers

## G Major Scale

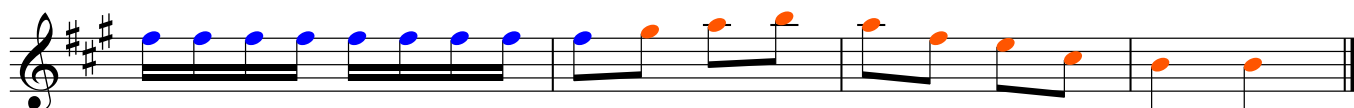
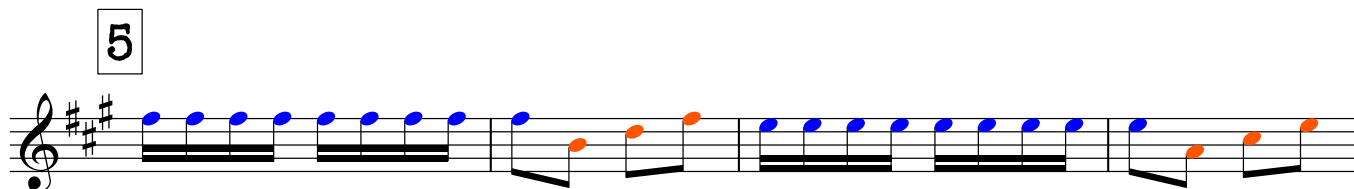
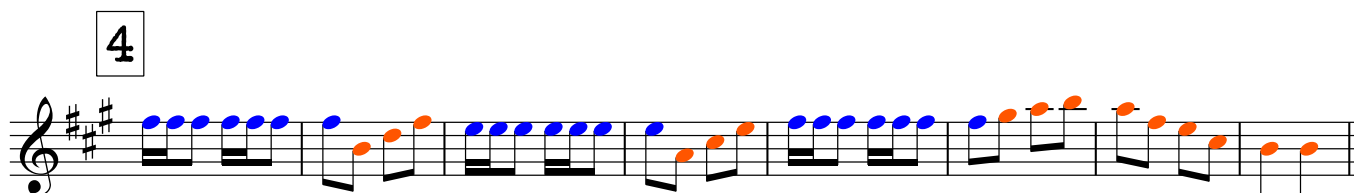
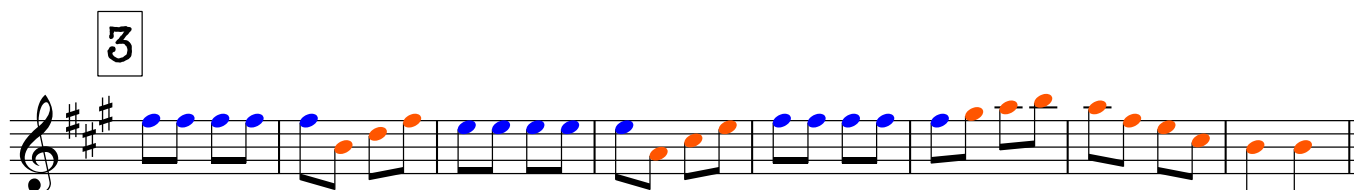
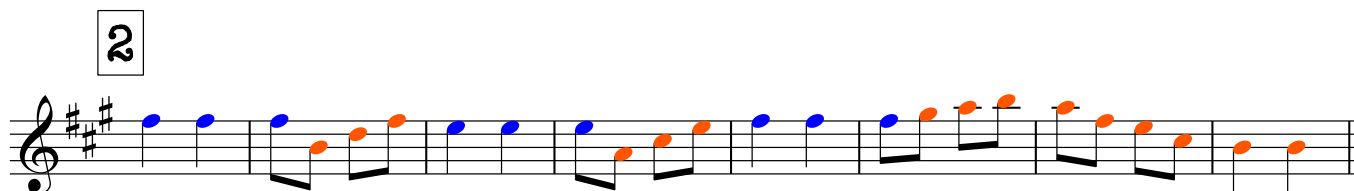
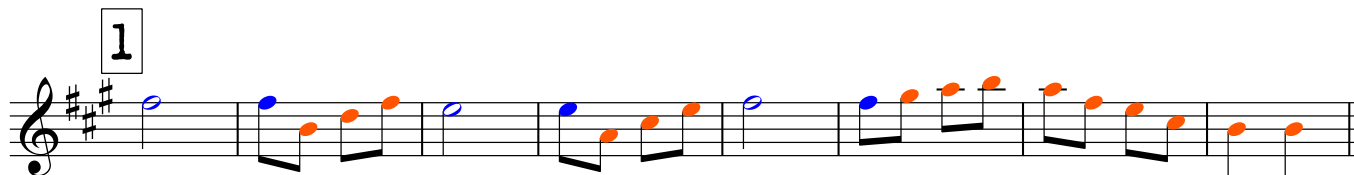
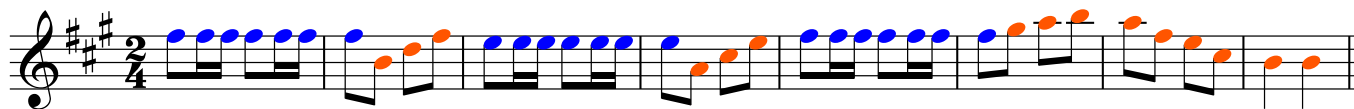
## Flea Fly Flo - A & E String

Folk Song

## Flea Fly Flo - G & D String

"What shall we do with the drunken sailor?"  
Theme & Variations

Moderato



## Echos

E-cho, I can hear you, (hear you, hear you) Though I can't get near you,  
 (near you, near you) You're so far a- away. (A - way, A - way)

## I Don't Know, But I've Been Told

## Marching tempo

## Everywhere We Go

## Marching tempo

Eve - ry - where we g - o! (eve - ry - where we g - o!) Peo - ple al - ways ask us,  
 (peo - ple al - ways ask us.) Who we a - re, (who we a - re.)  
 Where we come from, (where we come from.) So we tell them, (so we tell them.)  
 Love - ly love - ly Hit - chin, (love - ly love - ly Hit - chin!) If they can't hear us,  
 (if they can't hear us,) Shout a li - ttle lou - der (shout a li - ttle lou - der)

## All Fingers

## The Cuckoo

Peruvian Folk Song

Musical score for 'The Cuckoo' in G major, 2/4 time. The piece is marked *mf*. It consists of three staves of music. The first staff begins with a treble clef, a key signature of one sharp (F#), and a 2/4 time signature. The melody is primarily composed of eighth and sixteenth notes, with some dotted rhythms. The notes are color-coded: blue for the first two staves and green for the third. Vertical 'v' marks are placed above several notes, likely indicating fingerings. The piece concludes with a double bar line.

## Out A-Hunting

Folk Song

Steadily

Musical score for 'Out A-Hunting' in G major, 4/4 time. The piece is marked *mp*. It consists of two staves of music. The first staff begins with a treble clef, a key signature of one sharp (F#), and a 4/4 time signature. The melody is primarily composed of quarter and eighth notes, with some slurs. The notes are color-coded: blue for the first staff and green for the second. The piece concludes with a double bar line.

## Yoo Hoo!

Folk Song

Andante

Musical score for 'Yoo Hoo!' in G major, 4/4 time. The piece is marked *Andante*. It consists of four staves of music. The first staff begins with a treble clef, a key signature of one sharp (F#), and a 4/4 time signature. The melody is primarily composed of quarter and eighth notes, with some slurs. The notes are color-coded: blue for the first staff and green for the subsequent staves. Vertical 'v' marks are placed above several notes, likely indicating fingerings. The lyrics are written below the notes.

There's some-one liv-ing on a high, high hill, I won-der who it could  
 be. There's some-one liv-ing on a high, high hill who al-ways an-sw  
 me. Yoo hoo, Yoo hoo, Yoo hoo, Yoo hoo, He al-ways an-sw  
 me, Yoo hoo, Yoo hoo, Yoo hoo, Yoo hoo, He al-ways an-sw  
 me.

# Vive la Campagnie

7  
English Folk Song

**Vivace**

mf

The instrumental introduction consists of three staves of music in G major and 6/8 time. The first staff begins with a treble clef, a key signature of one sharp (F#), and a 6/8 time signature. The melody is marked *mf*. The second and third staves continue the melody with various rhythmic patterns and rests.

## Day - O

Jamaican Folk Song

**Calypso**

Day - O, — Day - O, — Day-light come and I wan-na go home

The first line of lyrics is set to a calypso rhythm in G major and 4/4 time. The melody is marked *mf*. The lyrics are: "Day - O, — Day - O, — Day-light come and I wan-na go home".

**Fine**

Day - O, — Day - O, — Day-light come and I wan-na go home

The second line of lyrics is set to a calypso rhythm in G major and 4/4 time. The melody is marked *mf*. The lyrics are: "Day - O, — Day - O, — Day-light come and I wan-na go home".

Come, Mis-ter Tal-ly Man, Tal-ly me Ba-na-na, Day-light come and I wan-na go home

The third line of lyrics is set to a calypso rhythm in G major and 4/4 time. The melody is marked *mf*. The lyrics are: "Come, Mis-ter Tal-ly Man, Tal-ly me Ba-na-na, Day-light come and I wan-na go home".

Come, Mis-ter Tal-ly Man, Tal-ly me Ba-na-na, Day-light come and I wan-na go home.

The fourth line of lyrics is set to a calypso rhythm in G major and 4/4 time. The melody is marked *mf*. The lyrics are: "Come, Mis-ter Tal-ly Man, Tal-ly me Ba-na-na, Day-light come and I wan-na go home."

Six han',se-ven han',eight han' Bunch Day-light come and I wan-na go home

The fifth line of lyrics is set to a calypso rhythm in G major and 4/4 time. The melody is marked *mf*. The lyrics are: "Six han',se-ven han',eight han' Bunch Day-light come and I wan-na go home".

**D.C. al Fine**

Six han',se-ven han',eight han' Bunch Day-light come and I wan-na go home.

The final line of lyrics is set to a calypso rhythm in G major and 4/4 time. The melody is marked *mf*. The lyrics are: "Six han',se-ven han',eight han' Bunch Day-light come and I wan-na go home."

# La Raspa

Mexican Folk Song

Vivo

mf

The first staff of music is in treble clef, key of D major (two sharps), and 6/8 time. It begins with a mezzo-forte (mf) dynamic marking. The melody consists of eighth and quarter notes, with some rests. The notes are color-coded: blue for the first half and green for the second half of the piece.

The second staff continues the melody with a repeat sign (double bar line with two dots) in the middle. The notes are color-coded: blue for the first half and green for the second half.

The third staff continues the melody with a repeat sign in the middle. The notes are color-coded: blue for the first half and green for the second half.

The fourth staff continues the melody with a repeat sign at the end. The notes are color-coded: blue for the first half and green for the second half.

The fifth staff continues the melody with a repeat sign at the beginning. The notes are color-coded: blue for the first half and green for the second half.

The sixth staff continues the melody with a repeat sign at the end. The notes are color-coded: blue for the first half and green for the second half.

The seventh staff continues the melody with a repeat sign at the beginning. The notes are color-coded: blue for the first half and green for the second half.

The eighth staff continues the melody with a repeat sign at the end. The notes are color-coded: blue for the first half and green for the second half.

The ninth staff continues the melody with a repeat sign at the beginning. The notes are color-coded: blue for the first half and green for the second half.

The tenth staff continues the melody with a repeat sign at the end. The notes are color-coded: blue for the first half and green for the second half.



# Cat Duet

Rossini

## Adagio

*mp*

## Allegretto

*p*

*cresc.*

*f*